



SIBUR

BIAXPLEN PRODUCT PORTFOLIO

Revised: June, 2020

Consumer segments



Tobacco films



Label films



Confectionary films



Other food packaging
films



Non-food films

The image shows a large-scale industrial manufacturing process. Several massive, horizontal rolls of a translucent, silvery-white material are being processed. These rolls are supported by a complex system of heavy-duty metal frames and rollers. The material appears to be a type of film or foil, likely used for packaging. The setting is a spacious industrial facility with high ceilings and visible structural elements like pipes and beams. In the foreground, a yellow safety railing is partially visible, and a control panel with a digital display and buttons is seen on the right side. The overall scene conveys a sense of large-scale industrial production.

Tobacco films

Tobacco films

BIAXPLEN produces all types of transparent films which are used for all kinds of overwrapping box packaging (tea and cigarettes).

Name	Description	Thickness, μ	COF	Shrinkage at 120 °C, 5 min		Corona Treatment	Production
				MD	TD		
TSHL	Shrinkable for box overwrapping	20	0.25	6,5*	6,5*	NO	Regular
TSHD	Shrinkable for cigarette packs wrapping	16, 18, 20	0.15	13	13	NO	Regular
TSHT	Shrinkable, printable for cigarette packs	20	0.15	12	12	YES	Regular
TSHS	High-shrinkable for cigarette packs wrapping	18, 20	0.15	10	17	NO	Regular



COF – coefficient of friction film/film, out/out, slip/slip side, UT/UT. Typical values are mentioned.

*Typical values for 120C, 5 min measurements

TSHL | Transparent, shrinkable film for carton boxes overwrapping



Properties

- Balanced slip properties
- Balanced shrinkage
- High rigidity
- High Gloss level
- High Transparency

Parameters

Thickness, mic	20
COF, OUT / OUT	0.25
Treatment	NO
Shrinkage, %	
MD / TD at 120°C, 5 min.	6,5±9,0 / 6,5±9,0

Application

- Is used as mono-web
- For box overwrapping
- For any box size

TSHD | Transparent, shrinkable film for cigarette single packs overwrapping



Properties

- Advanced Hot slip properties
- Suitable for all kind of known machines
- Balanced shrinkage
- Scratch resistant
- High rigidity

Parameters

Thickness, mic.	16,18, 20
COF, OUT / OUT	0.15
Shrinkage 130C, 15 min, %	
MD / TD	13 / 13
Treatment	NO

Application

- Is used for cigarettes packs overwrapping
- For horizontal packaging lines



Properties

- Printable
- Advanced Hot slip
- Balanced shrinkage
- Scratch resistant
- High rigidity

Parameters

Thickness, mic.	20
COF, OUT / OUT	0.15
Treatment (corona)	YES
Shrinkage, 130C, 15 min, %	
MD / TD	12 / 12
Treatment	Corona

Application

- Printed film for small cigarette pack overwrapping
- For horizontal packaging lines

TSHS High-shrinkable for cigarette packs wrapping



Properties

- Advanced Hot slip
- For all overwrapping machine types
- Scratch resistant
- High rigidity
- Better pack performance

Parameters

	TSHD	TSHS
Thickness, mic.	16, 18, 20	18, 20
COF, UT / UT	0.15	0.15
Shrinkage, 130C, 15 min, %		
MD	13	10
TD	13	17
Treatment	NO	NO

Application

- Printed film for small cigarette pack overwrapping

For horizontal machines overwrapping

A photograph of a factory interior showing a row of large, white, cylindrical rolls of label film. The rolls are arranged in a line, receding into the background. They are resting on a metal track with a yellow and black striped safety barrier. The background features industrial structures, including blue-painted steel beams and scaffolding. The lighting is bright, highlighting the smooth texture of the film.

Label Films

BIAXPLEN LTD produces 3 and 5-layers grades for wrap-around labelling of PET bottles, for pressure-sensitive labels production and for in-mould labelling.

Name	Description	Application	Thickness, μ	Density, g/cm ³	Transparency, %	Production
LGBA	Transparent	WAL	30, 35, 40	0,91	-	Regular
LOBA	White-pearl	WAL	35, 38, 47	0,68	20÷30*	Regular
LOBB	White-pearl high yield	WAL	38	0,62	25	Test
LOBC	White-pearl ultra high yield	WAL	38	0,55	25	On request
LOHM.M	Metallized cavitated	WAL	38	0,71	-	Regular
HOHM	Pearlized UV transparent	SAL	40	0,65	25	On request
LGBM.M	Metallized	SAL	50	0,91	-	Regular
LGBL	Transparent	SAL	50, 60	0,91	-	Regular
LWBL	Solid white film	SAL	50, 60	0,96	25	Regular
SOIL	White pearl, matt	IML	50, 60, 70	0,55	25	Test
STL	Transparent, matt	IML	57, 60	0,91	-	Test
SWL	Solid white	IML	55, 57	0,96	25	Test
STG	Transparent, gloss	IML	57	0,91	-	Test
LGHM.M	Metallized for WAL	WAL	30, 35, 40	0,91	-	Test
PGS	Base film for silicone coating	SAL	15, 20, 25, 30	0,91	-	Test

NEW!

LGBA | Label, transparent film for full wrap-around labelling



Properties

- High ink adhesion
- Good antistatic & slip properties
- Excellent optics
- High speed labelling
- Corona treated

Parameters

Thickness, mic.	30, 35, 40
COF, UT / UT	0.3
Treatment	Corona
Haze / Gloss, %	2 / 90
Flexo and Rotogravure printing, solvent based	YES
UV flexo, UV offset	YES / Primer*

Application

- PET bottles labelling
- For reverse and front printing
- For hot melt & cold glue application

LOBA
LOBB
LOBC

Label, white-pearlized films for full wrap-around labelling of PET bottles with standard, high and ultra high yield



Properties

- High ink adhesion
- Good antistatic & slip properties
- High opacity and gloss
- LOBA holds its shape better
- LOBC has ultra high yield

Parameters

	LOBA	LOBB	LOBC
Thickness, mic.	35, 38, 47	38	38
Density, g/cm ³	0.68	0.62	0.55
COF, UT / UT	0.3	0.3	0.3
Transparency, %	20÷30	25	25
Gloss T, %	85	85	80
Rigidity	+++	++	+
Yield, 38 μ, m ² /kg	38.7	42.4	47.9
Yield label pcs./kg	---	+9%	+20%

Application

- PET bottles wrap around labeling
- For front printing
- For hot-melt & cold glue application
- Solvent based printing
- UV printing (primer required)



Properties

- High gloss metallized surface
- Good antistatic and slip properties
- High yield
- More economic solution than transparent metallized

Parameters

Thickness, mic	38
COF, UT / UT	0.3
Weight, g/m ²	27.98
Optical density	1.8
All solvent based inks	Yes, Primer
UV flexo / UV offset	Yes, Primer for UV flexo

Application

- PET bottles wrap around labelling
- Gives metallic appearance for labels
- For hot-melt & cold glue label application



Properties

- High gloss metallized surface
- Good antistatic and slip properties

Application

- PET bottles wrap around labelling
- Provide metallic appearance for labels
- For hot-melt & cold glue label application

Parameters

Thickness, mic	30, 35,40
COF, UT/ UT	0,3
Optical density	1,8
All solvent based inks	Yes, Primer
UV flexo / UV offset	Yes, Primer for UV flexo



Properties

- High yield
- Superior gloss
- Advanced slip and anti-static properties
- UV transparent for UV curing process

Parameters

Thickness, mic.	40
Density, g/cm ³	0.65
Weight, g/m ²	26.0
Transmission, %	25
Treatment	Corona
For metallization / Heat sealability	Yes / Yes
2nd side corona treatability	Yes

Application

- Metallization
- Also applicable as base film (without metallization)
- UV lamination
- UV printing
- For production of pressure-sensitive labels

Metallized, Transparent, Solid White films for production of pressure-sensitive labels



Properties

- Thick films
- Migratory additives are not added
- One side corona treated
- High adhesion for printing
- Not coated

Parameters

	LGBM.M	LGBL	LWBL
Type	Metallized	Transp.	White
Thickness, mic	50	50, 60	50, 60
Density, g/cm ³	0.91	0.91	0.96
Yield, m ² /kg, 60μ	18.3	18.3	17.4
Transmission, %	-	-	25
Haze, %	3.5	3.5	-
COF, UT / UT	0.4	0.4	0.4

Application

- The base for production of pressure-sensitive labels
- For hot-melt, water-based, UV adhesive coating
- Base film for primer coating



Properties

- Good receptivity for silicone coating
- Provides good adhesion of silicone layer
- Low COF on both sides
- Without coatings

Parameters

Thickness, mic.	15..30
COF, UT / UT	0,4
Gloss, 45 °, not less	90
Treatment level	38
Treatment	Corona

Application

- Release-liner for pressure-sensitive label stock



Properties

- Both side corona treated
- Specially designed antistatic properties
- Without "blurring" the white dye of the film upon melting
- Without primer (not coated)

Parameters

Thickness, mic	50, 60, 70
Density, g/cm ³	0.55
Yield, 60 μ , m ² /kg	30.3
Transmission, %	25
Gloss on gloss side, %	80
Side for printing / Side for inmoulding	Gloss / Matt
Treatment, mN/m	38 / 36
Solvent based printing / UV printing	Yes / Yes, primer required

Application

- Roll or sheet feeding printing processes
- For injection molding
- For molding into PP and PE containers



Properties

- Both side corona treated
- Specially designed antistatic properties
- Without primer (not coated)

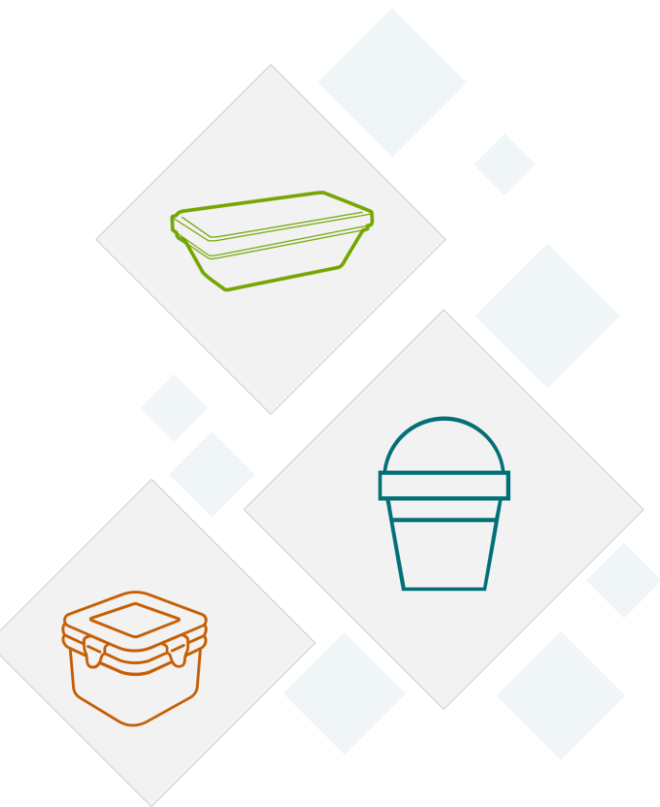
Application

- Roll or sheet feeding printing processes
- For injection molding
- For molding into PP and PE containers

Parameters

Thickness, mic	57, 60
Density, g/cm ³	0.91
Yield, 60 µ, m ² /kg	18,32
Haze, %	70
Gloss on gloss side, %	50
Side for printing / Side for inmoulding	Gloss / Matt
Treatment, mN/m	38 / 36
Solvent based printing / UV printing	Yes / Yes, primer required

SWL | White film for in-mould labels production



Properties

- Both side corona treated
- Specially designed antistatic properties
- Without primer (not coated)

Application

- Roll or sheet feeding printing processes
- For injection molding
- For molding into PP and PE containers

Parameters

Thickness, mic	55, 57
Density, g/cm ³	0.96
Yield, 60 µ, m ² /kg	17,36
Transmission, %	25
Gloss on gloss side, %	50
Side for printing / Side for inmoulding	Gloss / Matt
Treatment	38 / 36
Solvent based printing / UV printing	Yes / Yes, primer required

STG | Transparent gloss film for production of in-mould labels



Properties

- Both side corona treated
- Specially designed antistatic properties
- Without primer (not coated)

Application

- Roll or sheet feeding printing processes
- For injection molding
- For molding into PP and PE containers

Parameters

Thickness, mic	57, 60
Density, g/cm ³	0.91
Yield, 60 µ, m ² /kg	19,28; 18,32
Gloss, %	85
Side for printing / Side for inmoulding	Gloss / Matt
Treatment	38 / 36
Solvent based printing / UV printing	Yes / Yes, primer required

The image shows a large industrial facility, likely a factory for producing films or plastics. In the foreground and middle ground, several large, horizontal rolls of a light-colored material are being processed by machinery. The rolls are supported by a series of rollers and guides. In the background, there are more industrial structures, including pipes, beams, and a large white wall with a diagonal brace. The lighting is bright and even, highlighting the smooth texture of the material being processed.

Confectionary films

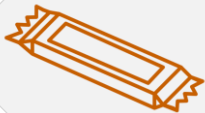
Metallized films

BIAXPLEN produces non-heat sealable and heat sealable metallized films with different barrier properties for production of flexible packaging of different types.

Name	Description	Thickness, μ	SIT, °C	OD	OTR	WTR	Production
PMP.M	Plain both side treated	15, 20, 30	-	2,2	100	1	On request
HMIL.M	With longer surface tension	20, 25, 30, 35, 40	105	1,8	90	1	Regular
HMHW.M	Low sealing intention temperature	15, 20	75	1,8	100	1	On request
HMPLB.M	Medium Barrier film	18, 20	105	2,3	50	1	Regular
HBV.M	High barrier film	17.5	95	2,5	15	0.2	Test
HOHMLB.M	Metallized pearl film	30, 35	105	2,5	90	0,4	Regular

Metallized side is the aluminum as treated side of the film; **SIT** – sealing intention temperature ut/ut, “No” – means that this film is not heat sealable; **OD** – average kept optical density; **OTR** – oxygen transmission rate, cm³/m²/24h; **WTR** – water vapor transmission rate, g/m²/24h not higher that mentioned; **UT** – untreated film side.

PMP.M | Metallized, Plain, both side treated film



Properties

- Both side treated film
- Medium barrier properties
- Non-heat sealable

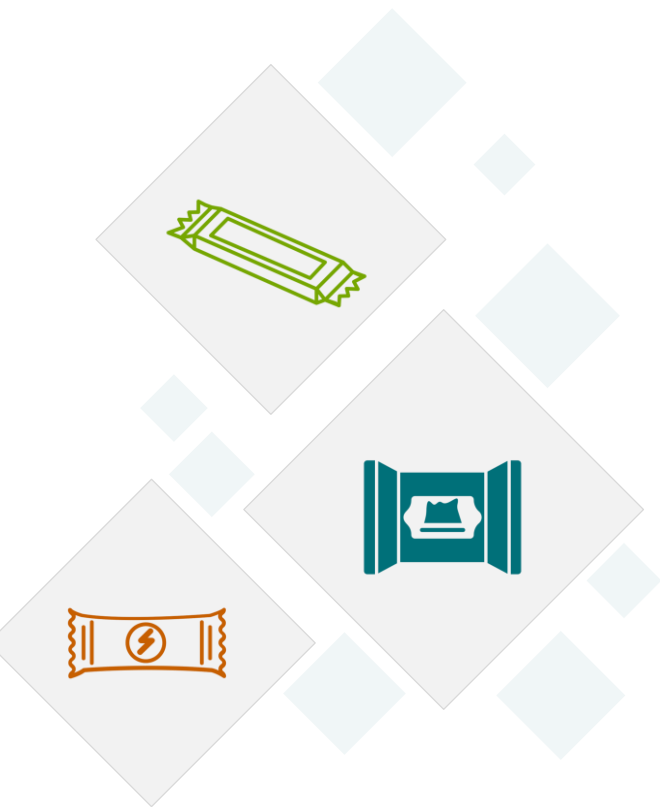
Parameters

Thickness, mic.	15, 20, 30
Optical density	2,2
COF, UT / UT	0,3
Surface tension, days	> 15
OTR, cm ³ / m ² / 24 h ~	100
WTR, g / m ² / 24 h ~	1
All kinds of printing	Primer required
Dry lamination / Extrusion lamination	Yes / Yes
Hot melt glue coating / Cold seal coating for UT side	Yes / Yes

Application

- Packaging with Cold seal coating
- As the middle layer in triplex lamination
- Lamination and printing

HMIL.M | Metallized, heat-sealable film



Properties

- Good barrier properties
- Long surface tension shelf-life
- High adhesion of metallized layer
- Good slip properties

Parameters

Thickness, mic.	20, 25, 30, 35, 40
Optical density	1,8
COF, UT / UT ~	0.3
SIT, ° C	105
OTR, cm ³ / m ² / 24 h	90
WTR, g/ m ² / 24 h	1
Lamination / Cold seal coating for UT side	Yes / Yes
All kinds of printing	Primer required

Application

- Flow-pack packaging production
- Lamination to duplex & triplex
- Cold seal glue coating onto UT film side
- Enhanced water-gas barrier properties for packaging



Properties

- One side metallized - 2nd side white pearl
- High yield, low-weight

Application

- Flow pack
- Biscuits, Chocolates, Chips, Truffles, etc
- In structure of tray covering
- Wrapping Cup bouillon

Parameters

Thickness, mic.	30, 35
Weight, g/m ²	24.5
Optical density	2,5
SIT, ° C	105
OTR, cm ³ / m ² / 24 h ~	90
WTR, g/ m ² / 24 h ~	0.4
Cold seal coating	Yes
Inline treatment UT	Yes

Opaque films

BIAXPLEN produces different grades of opaque heat sealable film for production of different types of flexible packaging.

Name	Description	Thickness, μ	Density, g/cm ³	Transparency, %	SIT, °C	Production
HOHL	White pearl, CS	30, 35, 40	0.72	30÷40*	105	Regular
HOH	White pearl, both sides treated	30, 35, 40	0.72	30÷40*	105	On request
HOHW	White pearl low temperature welding	30, 35, 40	0.72	30÷40*	75	Regular
HOCL	Pearl	25	0.65	25÷50*	105	Regular
HWHL	Solid white film	20, 30, 35	0.96	35÷50*	105	Regular
HOHG	White pearl film, both sides treated for CSR	20, 30, 35	0.74	35÷50*	105	On request
HOSL	White pearl 1 side treated for CSR	35, 40, 50	0.72	25	105	Test



UT - untreated side of the film; SIT – sealing intention temperature UT/UT; COF – coefficient of friction UT/UT;

CSR – cold seal reclosable; CS - cold seal single time opening

* - depends on the thickness

HOHL | White-pearl, heat sealable film



Properties

- Cavitated, high yield
- Protection against UV light
- High opacity, gloss and whiteness

Parameters

Thickness, mic.	30, 35, 40
Density, g/cm ³	0,72
Gloss, %	80
COF, UT / UT	0,35
SIT, ° C	105
Transparency, %	30 – 40*
Solvent based printing	Yes
Lamination / Cold seal coating	Yes / Yes

Application

- Flow-pack packaging production
- Chocolate, Candies, Ice cream, etc
- With / without cold seal glue coating

HOHW | White-pearl film with wide temperature sealing range



Properties

- Cavitated, high yield
- Protection against UV light
- High opacity, gloss and whiteness film
- High speed heat sealability

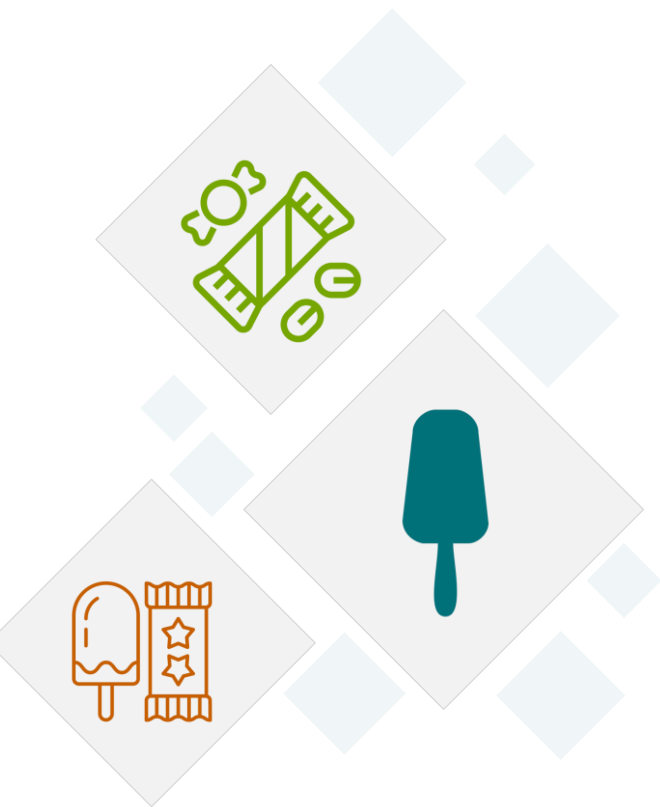
Application

- Flow-pack packaging production:
Candies, Ice-cream
Cookies, Cracker
- Provides packaging speed up to + 40%

Parameters

Thickness, mic.	30, 35, 40
Density, g/cm ³	0,72
COF, UT / UT	0,2
SIT, ° C	75
Treatment	Corona
Solvent and water based printing	Yes
Lamination	Yes

HOCL | White-pearl film, very high yield



Properties

- Pearl, cavitated film
- Very high yield

Parameters

Thickness, mic.	25
Density, g/cm ³	0,65
Weight, g/m ² 30 μ	19,5
SIT, ° C	75
Yield, m ² /kg 30 μ	51,3
Transmission, %	25 – 50*
Rigidity	Softer
Packs output, pcs	+ 10 %

Application

- Flexible packaging production
- Paper lamination





Properties

- High gloss and opacity
- Both side treated
- Without delamination of cavitated layer when open the packaging

Application

- Flow-pack packaging
- For CSR application
- For chocolate bars, ice-cream, etc.

Parameters

Thickness, mic.	40, 45, 50
Density, g/cm ³	0,74
Transparency	25-30*
Film side treatment	Both
Converting	
Printing and lamination	Yes
Cold seal coating	Yes

HWHL | Solid white, heat- sealable film



Properties

- Outstanding whiteness
- Protection against UV light
- High opacity and gloss
- Low COF

Parameters

Thickness, mic.	20, 30, 35
Density, g/cm ³	0,96
COF, UT / UT	0,35
SIT, ° C	105
Solvent based printing / Water based printing	Yes / Yes
Dry lamination	Yes
Cold seal coating on UT side	Yes

Application

- Flow-pack packaging production:
Chocolate bars, Candy, Ice cream,
Cookies, Cracker, Corn flakes

Matt films

BIAXPLEN produces different grades of matt films to provide paper-look appearance for the packaging

Name	Description	Thickness, μ	SIT, ° C	COF	Production
MGS	Non- heat sealable	20, 30, 35	No	0.25	Regular
MGPL	Heat sealable	20	105	0.35	Regular
MGR	Release film against cold seal glue	18, 20	No	0.3	Regular
MGFL	Heat sealable with high COF	15, 20, 25	110	0.5	Test
MGI	Low-matt appearance film	18, 20	No	0.3	Test



COF - coefficient of friction, UT/UT

UT - untreated side of the film

SIT - sealing intention temperature matt/matt

COF - coefficient of friction matt/matt

MGS | Matt, non-heat sealable film



Properties

- Matt, silky appearance
- High haze, low gloss
- Low COF

Parameters

Thickness, mic.	20, 30, 35
COF UT/ UT	0.25
SIT, °C	130
Haze, %	70
Solvent based printing	Yes
Lamination	Yes

Application

- Flow-pack packaging production
- Provide matt, paper like appearance for any kind of the packaging
- Uses as face film of packaging

MGPL | Matt, heat sealable film



Properties

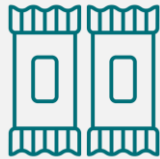
- Matt, silky appearance
- High haze, low gloss
- Low COF
- Heat sealable matt / matt side
- Overlap heat sealable

Parameters

Thickness, mic.	20
Density, g/cm ³	0.91
COF, UT/ UT	0.35
SIT, UT / UT, °C	105
Solvent based printing	Yes
Lamination	Yes

Application

- Производство упаковки Флоу – Пак
- Придание упаковке матового, «бумажного» вида
- Применяется как лицевая пленка для упаковки
- Для производства «стоячих» пакетов



Properties

- Matt, silky appearance
- Release properties against CS latex glue
- High haze, low gloss
- Low COF

Parameters

Thickness, mic.	18, 20
Density, g/cm ³	0.91
Yield, m ² /kg	61.1
COF, UT / UT	0.3
Heat sealability	No
Solvent based printing / Lamination	Yes / Yes
Printable film side	Glossy
Release film side	Matt

Application

- Flow-pack packaging production
- Provide matt, paper-look appearance for any kind of the packaging
- Uses as face film of packaging
- Production of "Flow-Pack" for HFFS machines

Transparent heat sealable films

BIAXPLEN produces different grades of heat-sealable transparent film used for printing and lamination in flexible packaging industry.

Name	Description	Thickness, μ	SIT, °C	COF	Production
HGHL	Low COF film	20, 30, 35	105	0.2	On request
HGPL	Commonly used	15, 20, 25, 30, 35, 38, 40	105	0.3	Regular
HGP	Commonly used, both sides treated	15, 20, 25, 30, 35, 40	105	0.3	On request
HGSL	With a bit higher COF, for hot climate	20	105	0.35	On request
HGFL	High COF film	20, 25, 30	105	0.45	Regular
HGHW	With wide range temperature of heat sealing	20, 25, 30	75	0.25	On request
HGPL.PF	Commonly used. Phthalate-free	15, 20, 25, 30, 35, 40	105	0.3	On request



SIT - sealing intention temperature ut/ut

COF - coefficient of friction

Ut - untreated film side

HGPL | Transparent, heat sealable film for general application



Properties

- Wide temperature of heat sealing
- Medium coefficient of friction
- Good optical properties

Parameters

Thickness, mic.	15 - 40
COF, UT/ UT	0.3
SIT, °C	105
Treatment	Corona
Solvent based printing	Yes
Lamination	Yes
Cold seal coating for UT side	Yes

Application

- Front and reverse printing
- Any kind of lamination processes
- Flow-pack packaging production
- For food and industrial goods

HGHL | Transparent, heat sealable film with low COF



Properties

- Wide range of heat sealing
- Both side low coefficient of friction
- Good optics

Parameters

Thickness, mic.	20, 30, 35
COF, UT / UT	0.2
COF, T / T	0.2
SIT, °C	105
Treatment	Corona
Solvent based printing / Lamination	Yes / Yes
Cold seal coating	NO

Application

- Front and reverse printing
- Any kind of lamination processes
- Flow-pack packaging production
- When enhanced slip properties are required for external and/or internal packaging side

HGHW | Transparent, wide heat sealing range film



Properties

- Both side low COF film
- Both side wide range heat sealing temperature

Parameters

Thickness, mic.	20, 25, 30
COF, both sides	0.25
SIT, UT / UT, °C	75
SIT, T / T, °C	100
Treatment	Corona
Solvent based printing / Lamination	Yes / Yes
For cold seal	No

Application

- Very high packaging speed
- For printing and lamination
- For overlap and tail sealing
- Provides up to + 40% increasing packaging speed compared with film with SIT=105°C

A photograph of a large industrial machine, likely a film extruder or packaging line, in a factory setting. The machine is metallic and complex, with various pipes, valves, and structural elements. A large roll of clear plastic film is being processed by the machine. Yellow safety railings are visible in the foreground and background. The text "Other food packaging films" is overlaid on the image in a white, sans-serif font.

Other food packaging films

BRUCKNER

Transparent films

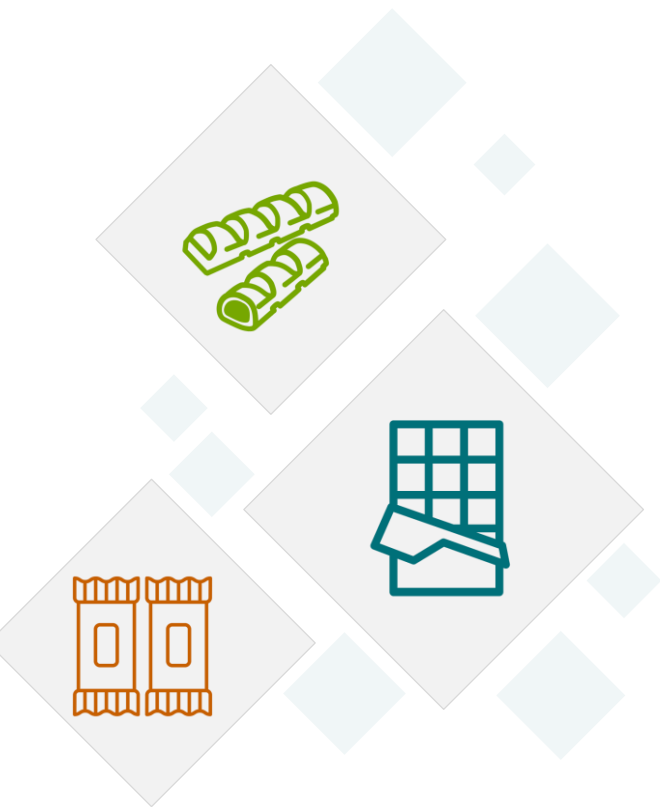
BIAXPLEN produces different grades of transparent films for food packaging.

Name	Description	Sealing	Thickness, μ	SIT, °C	COF	Production
PGR	Release film for packs with cold seal	No	15, 20, 25	0,25	Corona	Regular
PGI	Improved release properties for CS application	No	20, 25	0,25	Corona	Project
HASL	Antifog	Yes	20, 25, 30, 35	0,25	Corona	Regular
ReG	Film for lamination (sachets) for PET substitution	No	20, 25, 28, 30, 35, 40, 48	0,45	Corona	Regular
ReS	Film for lamination (sachets) for PET substitution With high anti-static properties	No	28	0,40	Corona	On request

NEW!

COF - coefficient of friction

Ut - untreated film side



Properties

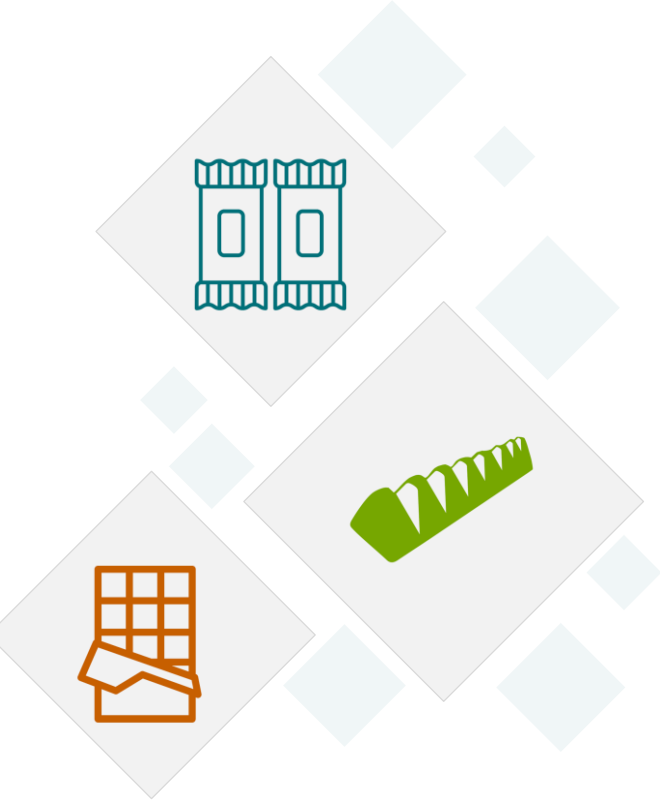
- High release properties
- Low COF
- Good optical properties

Parameters

Thickness, mic.	15, 20, 25
COF, UT/ UT	0,25
SIT, °C	Non- sealable
Treatment	Corona
Release side	Untreated
Converting	
Solvent based printing	Yes
Lamination	Yes

Application

- Packaging with cold seal latex glue
- Any kind of printing and lamination processes



Properties

- High release properties
- Low COF
- Good optical properties
- Advanced unwind behavior in complex with pearlized laminated films

Parameters

Thickness, mic.	15, 20, 25
COF, UT / UT ~	0,25
SIT, °C	None sealable
Treatment	Corona
Converting	
Solvent based printing	Yes
Lamination	Yes

Application

- Packaging with cold seal latex glue
- Any kind of printing and lamination processes



Properties

- Good antifog properties at +4C and higher
- Both side low COF
- Without coating

Parameters

Thickness, mic.	20..35
COF, both side	0.25
SIT, both side, °C	120
Treatment side	Both
Antifog, not less	7D
Antifog side	IN
Solvent based printing	Yes

Application

- Packing for salads, herbs, vegetables
- With and without printability
- Flow-pack on horizontal and vertical machines

ReG | Transparent non-heat sealable film for lamination (sachets) for PET substitution



Properties

- High clarity and rigidity
- 100% recyclable with other polyolefin films

Parameters

Thickness, mic.	20, 25, 28, 30, 35, 40, 48
COF, UT / UT	0,45
SIT, °C	No
Treatment	Corona
Solvent printing	Yes
Lamination	Yes

Application

- Multi-layer packaging production
- Suitable for printing and lamination
- Could be used for leads productions
- Could be used for sachets

Competitors

PET films

Transparent non-heat sealable film for lamination (PET substitution) with high anti-static properties



Properties

- High anti-static properties
- High clarity
- 100% recyclable with other polyolefin films

Parameters

Thickness, mic.	28
COF, UT / UT	0,40
SIT, °C	No
Treatment	Corona
Solvent printing	Yes
Lamination	Yes

Application

- Multi-layer packaging production (also with high speeds)
- Suitable for printing and lamination
- Could be used for leads productions
- Could be used for sachets

Competitors

A photograph of a large industrial facility, likely a film manufacturing plant. In the foreground, there are control panels with digital displays and buttons. Behind them, large rolls of white material are being processed by machinery. The scene is brightly lit with overhead industrial lights. A safety fence with yellow railings is visible in the mid-ground.

Non-food films

Non-food films

BIAXPLEN produces different grades of transparent films for industrial packaging.

Name	Description	Thickness, μ	COF	Treatment	Production
PMD.M	Non- heat sealable, metallized	30, 35	0.3	Corona	Regular
MGT	Semi-matt, non-heat sealable film	27	0.3	Flame	Regular
PGA	For adhesive tapes	23...40	0.5	Corona	Regular
PGA	For no-noise adhesive tapes	23...40	0.5	Flame	Regular
MGD	Both sides matt	35	0.35	Corona	On request
PGD	Non- heat sealable, for decorative packaging	20, 25, 28, 30, 35, 40, 48	0,45	Corona	Regular

COF - coefficient of friction



Properties

- Long time tension of metallized surface
- Low COF

Application

- Decorative packaging / overwrapping
- For “pockets” production

Parameters

Thickness, mic.	30, 35
Optical density	1,8
COF, UT / UT	0,3
Surface tension, days	> 30
All kinds of printing	Primer required
Dry and Extrusion lamination	Yes/Yes
Hot melt and solvent based glue coating	Yes

MGT | Semi-matt, non-heat sealable film



Properties

- Matt appearance
- High clarity level
- High antistatic properties
- Low COF

Parameters

	MGS	MGT
Thickness, mic.	All	27
Density, g/cm ³	0,91	0.91
COF, UT/ UT	0,25	0.3
Opacity, %	70	25-35
Gloss (matt side), %	12	25-35
Treated side	Gloss	Matt
Treatment	Corona	Corona

Application

- Production of envelopes with filmic “window”
- Adhesive coating onto the matt side
- To be used as decorative packaging for flower, inside decoration of gifts when paper-look is required

Competitors

- PET and Polystyrene films:
- DOW PROCITE 27
- MULTIPLASTICS EWF 2003



Properties

- High clarity
- 100% recyclable with other polyolefin grades

Application

- For printing and lamination
- Suitable for different kinds of decorative packaging and overwrapping

Parameters

Thickness, mic.	20, 25, 28, 30, 35, 40, 48
COF, UT/ UT	0,45
SIT, °C	No
Treatment	Corona
Solvent printing	Yes
Lamination	Yes

BIAXPLEN Technical Service

TECHNICAL ISSUES



Gianfranco Prota

Expert, Technical Service

+43 664 887 52242

protag@sibur-int.com

CLAIM PROCEEDING



Smirnova Nadezhda

Chief Expert, Technical Service

+7 (495) 733-93-18, 2609

ClientService@biaxplen.sibur.ru



Sosnitskaya Maria

Specialist, Technical Service

+7 (495) 733-93-18, 2212

+7 (985) 217-04-34

ClientService@biaxplen.sibur.ru